

Contents

License.....	2
Introduction.....	3
Supported Functionality.....	3
Usage Notes	4
Main Screen.....	4
Virtual Machines	5
Remove Virtual Machine.....	5
Copy to New Location	5
Add Virtual Machine.....	5
Virtual Drives.....	6
Point to New Location	6
Copy to New Location	6

License

Copyright (c) 2009, Armga Consulting LLC DBA DiMASoft Technologies
All rights reserved.

Redistribution and use in binary forms, without modification, are permitted provided that the following conditions are met:

- * Redistributions in binary form must reproduce the above copyright notice, this list of conditions and the following disclaimer in the documentation and/or other materials provided with the distribution.
- * Neither the name of Armga Consulting LLC DBA DiMASoft Technologies nor the names of its contributors may be used to endorse or promote products derived from this software without specific prior written permission.

THIS SOFTWARE IS PROVIDED BY Armga Consulting LLC 'AS IS' AND ANY EXPRESS OR IMPLIED WARRANTIES, INCLUDING, BUT NOT LIMITED TO, THE IMPLIED WARRANTIES OF MERCHANTABILITY AND FITNESS FOR A PARTICULAR PURPOSE ARE DISCLAIMED. IN NO EVENT SHALL Armga Consulting LLC BE LIABLE FOR ANY DIRECT, INDIRECT, INCIDENTAL, SPECIAL, EXEMPLARY, OR CONSEQUENTIAL DAMAGES (INCLUDING, BUT NOT LIMITED TO, PROCUREMENT OF SUBSTITUTE GOODS OR SERVICES; LOSS OF USE, DATA, OR PROFITS; OR BUSINESS INTERRUPTION) HOWEVER CAUSED AND ON ANY THEORY OF LIABILITY, WHETHER IN CONTRACT, STRICT LIABILITY, OR TORT (INCLUDING NEGLIGENCE OR OTHERWISE) ARISING IN ANY WAY OUT OF THE USE OF THIS SOFTWARE, EVEN IF ADVISED OF THE POSSIBILITY OF SUCH DAMAGE.

Microsoft, Active Directory, Hyper-V, Windows, Windows Server, and the Windows logo are either registered trademarks or trademarks of Microsoft Corporation in the United States and/or other countries.

All other trademarks are property of their respective owners.



Introduction

The existing Hyper-V management tools provide excellent support for importing and export Hyper-V VM images. Moving individual files, however, is not support via the current Hyper-V management tools resulting in tedious manual configuration and setup to move or reposition a VM configuration file or VM Virtual hard Disk (VHD). For example, moving a VHD due to disk space issues can require several command line configuration changes to get the links and security correct.

This utility is designed to simplify the process of moving Hyper-V configuration and VHD files.

This utility is not designed to support a production or mission critical environment.

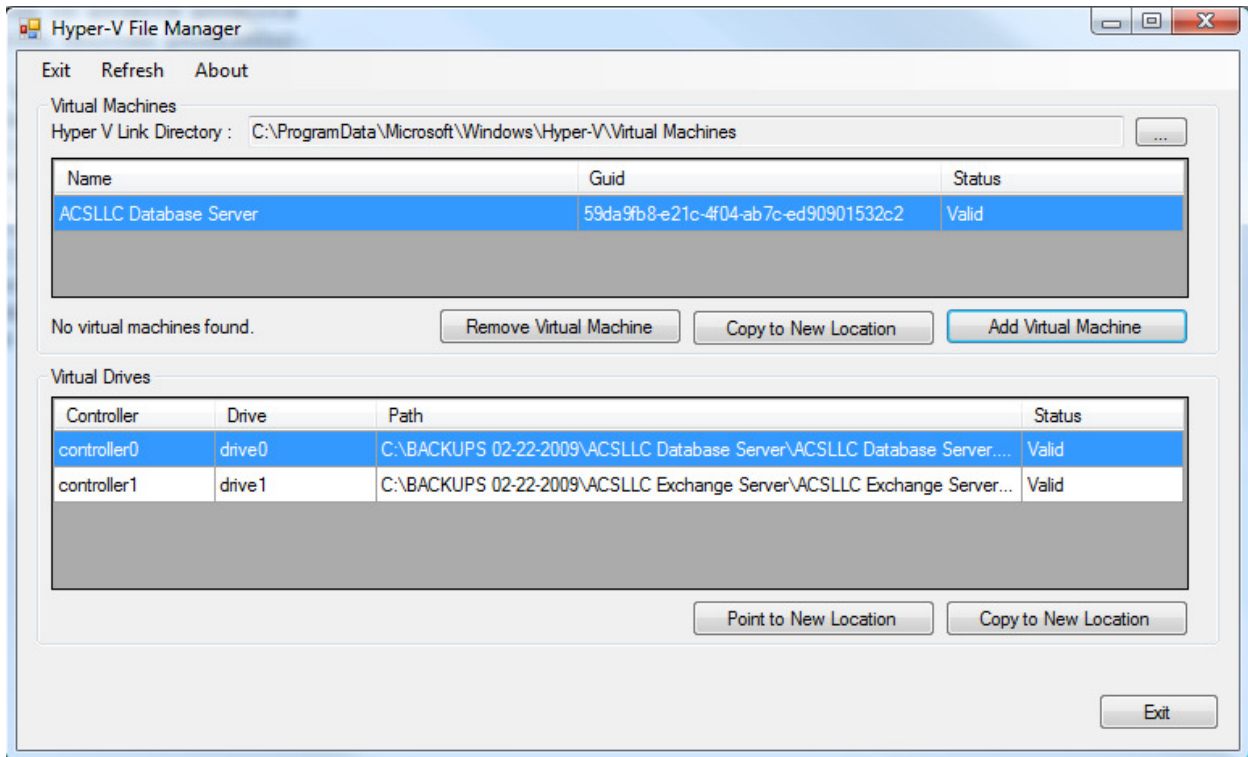
Supported Functionality

1. Link an existing VM configuration file into the Hyper-V management snap in
2. Move an existing VM configuration file to a new location and setup appropriate security
3. Move an existing VM VHD file to a new location and setup appropriate security
4. Change the path of an existing VHD file to a new location and setup appropriate security

Usage Notes

- The Hyper-V service must be stopped prior to using this utility

Main Screen



Virtual Machines

This section lists all currently linked Virtual Machines for the server.

- Name
Name of the VM Image as presented by Hyper-V
- Guid
The internal identifying Guid for the Hyper-V image
- Status
Valid / Invalid
If Invalid is displayed, the Hyper-V service may still be running

Remove Virtual Machine

Removes the symbolic link for the selected virtual machine. The actual XML configuration file will not be removed or deleted.

NOTE: If the symbolic file is corrupted or the actual XML configuration file is in the Hyper-V link directory, the actual file will be deleted.

Copy to New Location

Copies the VM XML configuration file to a new location and configures all necessary symbolic links and security. The original VM XML configuration file is not deleted.

Add Virtual Machine

Creates a new symbolic link to a pre-existing VM XML configuration file and configures all necessary security. This is usefully if the VM was removed or deleted from the Hyper-V manager or if you are restoring an existing copy of a virtual machine

Virtual Drives

This section lists all attached Virtual Hard Drive (VHD) files for the selected VM.

- Controller
Device controller the VHD is assigned to
- Drive
Drive number on the controller for the VHD
- Path
Physical Path to the .VHD image file
- Status
Valid / File Not Found
File not found occurs if the configuration files points to a location which does not contain the .VHD file.

Point to New Location

Resets the physical path of the .VHD file, configures all necessary security, and updates the VM configuration file.

NOTE: This function does not move or otherwise alter any .VHD files

Copy to New Location

Copies the .VHD file located at the physical path to a new, user selected location, configures all necessary security, and updates the VM configuration file. The original .VHD file is not deleted.